

Shorewood Signal



Shorewood High School & Shorewood High School PTSA 6.12.105
17300 Fremont Ave North, Shoreline, WA 98133
<http://schools.shorelineschools.org/shorewood/>
www.shorewoodptsa.com

Vol. 28, No. 1. *September 2014*



On Friday, August 29th, the Class of 2018 enjoyed an assembly and orientation activities at Shorewood High School. The LINK orientation program will continue into the school year to help the new freshmen adjust to life at Shorewood. Photo by Paul Villanueva.

New School Year, New Schedule

Get the scoop on the new Bell Schedule and the new academic support period on [page 3](#), and plan on attending Curriculum Night on October 2nd. To get the year off to a great start, see the Counselors' recommendations for freshmen on [page 6](#) and peer advice for all students on [page 7](#).

For Parents

Learn about PTSA's programs on [page 2](#); sign up for the weekly After Shorewood email on [page 4](#); become a volunteer on [page 5](#); sign up for Free & Reduced Lunch [page 6](#); read the Counselors' notes for all grades on [page 6](#); figure out the difference between PTSA, EQC, and Boosters on [page 5](#); plan to attend Principal Coffees [page 5](#); subscribe to current sports information on [page 7](#); nominate an outstanding teacher [page 8](#); keep track of everything with the [Calendar](#); be informed about education funding on [page 11](#).

Highlighted Events

Dealing with college applications this fall? Attend the Counselors' presentation on October 9th [page 5](#). Like great food? Attend a Culinary Arts Chef Dinner [page 7](#). Want to support the T-Birds? Attend Booster events [page 7](#).

Contents (click to page)

- 2 [PTSA](#)
What is the PTSA About?
Join the PTSA
- 3 [Principal's Page](#)
Bell Schedule Details
Curriculum Night October 2nd
SAS: Student Academic Support
Welcome
- 4 [After Shorewood](#)
Easy Scholarship
SAT & ACT Dates
Opt in to the Weekly Email
- 5 [PTSA Extra](#)
Legislative Update
PTSA/ EQC/ Boosters: Which is Which?
PTSA/ Principal Coffees
Reflections Arts Competition
- 6 [Counselors' Page](#)
College Application Overview Oct. 9th
Contact your Counselor
Free & Reduced Lunch
Graduation Requirements
Freshmen: Set up for success
Juniors: Sign up for PSAT
Seniors: Watch your credits
- 7 [Student Activities & Athletics](#)
Boosters Events
Culinary Arts Chef Dinners
Subscribe to Wesco Athletics
- 8 [School & District News](#)
Construction
Nominate a Teacher
- 9 [Community](#)
Outdoor Movie Night
The Rec
- 10 [Calendar](#)
- 11 [PTSA Legislative Supplement](#)

2014–15 PTSA Board

[Click Name to Contact](#)

President Patty Sanders

Vice President Lisa Surowiec

Secretary Rene Streeter-Dybdahl

Treasurer Sallie Lumley

Communications Marianne Stephens

EQC Kerry Petit

Family Services Wendy Zieve

Legislation Suzanne Gugger

Membership Amy Grady

Newsletter Marianne Stephens

Student Services Amy Stensrud

Website Julie Gaevert



Show your support for Shorewood PTSA

Amy Grady, Membership Director

The mission of the Shorewood PTSA is to provide academic enrichment and advocacy for all

Shorewood students. Add your voice and your vote to the organization that advocates for student success at all levels. Help us meet our 2014/15 goal of 462 members. Why 462? That's exactly 25 more members than we had last year. You can get us there! See www.shorewoodptsa.com.

Pass the Hat: Our only fundraiser this year is paired with our

membership drive. While we accept donations anytime, we formally pass the hat at the Shorewood Fall Open House and Curriculum Night October 2nd. Your donations to the PTSA are essential for supporting a variety of programs. Join now at the [PTSA website](#) or download the [membership form](#) and turn it in before, during, or after the Open House on the 2nd of October. If you have questions about Membership, contact [Amy Grady](#). Thank you for joining!

What is Shorewood PTSA About?

Patty Sanders, PTSA President

PTSA Mission Statement: Shorewood PTSA provides academic enrichment and advocacy for all Shorewood students.

When you donate to Shorewood PTSA, how is your money spent?

The PTSA runs all programs using donations given during our Pass The Hat fundraiser. The bulk of donated funds go to academic support, basic needs support, legislative support and advocacy, and resources for SW family and staff. A small portion of the membership funds go to the state and national PTA membership dues, administrative expenses, leadership support, and community donations. EQC, Education for Quality Classrooms, operates under PTSA, but only donations designated for EQC go to classroom grants. [See [page 5](#) to learn the differences between PTSA, EQC, and Boosters.]

Our goal for academic support is to create and/or support programs that enrich students' academic experiences and ensure that these programs touch every student at Shorewood.

Programs

SAT Prep: We are building on a program started last year to provide affordable SAT Prep for all students. We hope to offer a session this fall.

After Shorewood: originally created four years ago when Shorewood had no college/ career counselor, After Shorewood aims to empower parents to guide their students toward whatever might come after graduating from Shorewood. The volunteers maintain www.aftershorewood.org and send a weekly email to parents who opt in. See [page 4](#).

Homework Club: Run by Shorewood and supported by the PTSA, this program targets struggling students in a teacher-staffed after school homework time.

Advanced Academic Achievement (AP Prep): A Shorewood program funded by the PTSA that provides funds for teachers to conduct AP preparation sessions prior to the Advanced Placement exams in May.

Shorewood High School at Risk: Funded by both the PTSA and Boosters, this program enables our counselors to provide scholarships for basic needs items such as course fees and ASB cards for students in need.

Summer School: Students primarily take summer school classes to improve the grade of a class previously taken, or to move to more rigorous classes more quickly. The PTSA provides scholarships for students who could not otherwise afford to pay for summer school.

Reflections: The PTSA provides volunteers and funding for the National PTA's Reflections Arts Competition. See [page 5](#) for current information.

Volunteers: When Shorewood or the PTSA need volunteers, they email the Shorewood PTSA Volunteer e-list, and PTSA members step up if they are available. See "Volunteer for PTSA" on [page 5](#).

Find out more on: www.shorewoodptsa.com.

From the Principal's Desk

Bill Dunbar, Principal

Welcome back to school and thank you for helping your student prepare for a successful year at Shorewood. There is a great deal underway: we have a full program of learning, community activities and athletics planned. With our new building open, we have adapted our bell schedule to better serve students and provide opportunities for greater support. Our staff will engage with the continuing state-wide shift to Common Core State Standards, Next Generation Science Standards, and implement the new, nationally-normed Smarter Balanced Assessment. Finally, we will engage the community in self-study and reflection on our next 5 years as part of our school accreditation process. Thank you for your continuing support of our school.

SAS / Period 10

The new schedule includes SAS or Student Academic Support every day for 30 minutes at 9:40 AM after the first long period. SAS is a home base period designed to 1) support student learning and 2) help students connect to school. SAS may be listed on schedules as Period 10. Teacher-directed activities may include: intervention, 1:1 or small group work; pre-teaching; re-teaching; work completion; or make-up work. The goal is that every student will be well-known by at least one adult through small groups, academic monitoring, and school-wide activities.



SW staff is ready! Photo by P. Villanueva

Bell Schedule

The new bell schedule includes "A" and "B" long period days. Typically, Tuesdays and Thursdays are "B" days (2-4-6); Wednesday and Friday are "A" days (1-3-5); and Mondays alternate "A" and "B" days. Classes will meet for 100 minutes. School begins every day at 7:50 a.m., concludes at 2:35 p.m., includes a 30-minute SAS period (see article below left), and 30 minutes for lunch. Details, exact times, and special schedules can be found on the [Bell Schedules](#) page under the Administration tab. For an overview of A and B days, view the [Annual Calendar](#).

Standard Bell Schedule Rotation

	Monday	Tuesday	Wednesday	Thursday	Friday
Week 1	A	B	A	B	A
Week 2	B	B	A	B	A

SWHS Standard A/B Bell Schedule				Period Length
Period 0	6:40 AM	7:40 AM		0:60
Warning Bell	7:40 AM			0:10
Period 1/2	7:50 AM	9:30 AM		1:40
Passing	9:30 AM	9:40 AM		0:10
SAS	9:40 AM	10:10 AM		0:30
Nutrition /Pass	10:10 AM	10:25 AM		0:15
Period 3/4	10:25 AM	12:05 PM		1:40
Passing	12:05 PM	12:15 PM		0:10
Lunch	12:15 PM	12:45 PM		0:30
Passing	12:45 PM	12:55 PM		0:10
Period 5/6	12:55 PM	2:35 PM		1:40
Final Bell	2:35 PM			

Curriculum Night October 2nd

All Shorewood parents and guardians are invited to Curriculum Night on Thursday, October 2nd. This is an important opportunity to form a partnership with your student's teachers, visit the campus, and hear about activities available to students. Current students, staff, and parents will be available to help you explore and see for yourself what Shorewood has to offer. Parking is available from school entrances on 175th and Fremont Avenue North.

For parents and guardians whose students have period 0 or 7 classes, the evening program begins at 6:45–6:55 p.m. Please report directly to the room listed on the student's schedule. The standard program begins at 7:00–7:15 p.m. with a school community meeting in the T-Bird Gym. From there periods 1-6 meet for 10 minutes each.

Our annual mid-evening video program highlights the annual PTSA "Pass the Hat" fundraiser and membership drive that supports classroom grants, help for struggling students and families, and staff appreciation. Our amazing PTSA makes it all happen through this one fundraiser; we hope you will participate. Curriculum Night ends with the conclusion of sixth period at 9:00 p.m.

Be prepared: download the [PTSA Membership Form](#) or join online via www.shorewoodptsa.com.

After Shorewood



A resource for all Shorewood families, run by PTSA/ school volunteers in cooperation with the Shorewood Administration, Counseling Department, and Career Center. We support families as they help their

students figure out life After Shorewood, whether the goals involve college, vocational school, or a career.

Seniors: Think Deadlines!

If there is a chance you might go to a state school in Washington, Oregon, or any other western state, check out the latest [Tidbits](#) for some important deadlines. If you apply early to many schools, you can be eligible for tens of thousands of dollars of scholarships and tuition discounts. Amounts vary, but being early almost always means more money toward your education.

2014-15 SAT/ ACT Dates

Register for the SAT and ACT directly, not through school. Shorewood is usually a testing site for these tests (as long as you sign up early!) but the school does not administer the tests.

SAT & SAT Subject Tests

Test	Sign up by
October 11	September 12*
November 8	October 9
December 6	November 6
January 24	December 29
March 14	February 13
May 2	April 6
June 6	May 8

register at sat.collegeboard.org

*Late registration until September 30.

ACT

Test	Sign up by
September 13	August 8 [†]
October 25	September 19
December 13	November 7
February 7	January 9
April 18	March 13
June 13	May 8

register at actstudent.org

[†]Registration closed. There is generally a 10-day late ACT registration period.



The LINK crew and Shorewood staff offered a warm welcome to the new freshman class at the end of August. Photo by Paul Villanueva.

www.aftershorewood.org

- Timelines by grade level
- Community Service opportunities
- Calendar of college-related events
- Articles & other resources
- Tips for senior families on Naviance & the Common App
- Job resources

Opt-In Weekly Emails

After Shorewood will send an email once a week to parents who opt in. The email will include:

- information on a weekly theme;
- grade by grade reminders;
- upcoming college rep visits at Shorewood and in the Seattle area;
- scholarship opportunities;
- recommended resources;
- short features of selected colleges;
- helpful articles.

See a sample of the August 31st Tidbits email (Theme "Fun") from the [Tidbits Archive](#) of the weekly emails from the last year. Emails are usually sent on Sundays. To opt in, send an email to aftershorewood@gmail.com with "weekly email" in the subject line and we will sign you up! We will not share your email address.

Want an Easy Scholarship?

All you have to do is attend College Visits in the Career Center. One \$100 scholarship will go to a senior, and one \$100 scholarship will go to a freshman, sophomore, or junior. When you attend a college visit, you will be asked to sign in. If you attend two or more college visits between now and January, you will get your name in a hat for the scholarship. The more you come, the more chances you get! Be sure you sign in *on an After Shorewood sheet* when you attend. "College visit" means any postsecondary institution. Representatives from the military, community colleges, technical schools visit Shorewood, and will count toward the scholarship. Visits are arranged by College and Career Readiness Coordinator [Erika Spellman](#). Watch for the schedule soon.



PTSA/ EQC/ Boosters: Which is Which?

Shorewood PTSA is a conventional Parent Teacher Student Association with many functions in the Shorewood community, including efforts in academic enrichment. The PTSA holds one fundraiser, Pass the Hat, in conjunction with the Fall PTSA Membership Drive. You can join PTSA on www.shorewoodptsa.com or by turning in a paper membership form anytime to the front office, or during the fall Open House on October 2nd. Donations are gratefully accepted all school year. Please "like" Shorewood PTSA 6.12.105 on Facebook to stay connected.

EQC, Education for Quality Classrooms, is a PTSA committee that provides classroom grants. On your PTSA membership form, there is a separate line for EQC; money collected will go directly to teachers' classroom projects. EQC traditionally fundraises with a mail campaign in the fall and a holiday wreath/poinsettia sale in the winter.

Shorewood Boosters is a completely separate nonprofit organization that supports clubs and activities. The Boosters sell Shorewood gear, coordinate food concessions at many sporting events, and hold an annual auction in March which in recent years has raised money for a new piano, band uniforms, video equipment, and other tangible items. See [Shorewood Boosters website](#).

Many Shorewood parents support all three causes since they connect with various aspects of student life at Shorewood High School.

Reflections Arts Contest

Kathy Henderson, Reflections Chair



"The world would be a better place if..."

Now is a perfect time to explore, create, and—for students interested in pursuing the arts after high school—think about portfolio work. Many scholarships and colleges look favorably at students whose work is exhibited or has received awards. "The world would be a better place if..." is the 2014-15 Reflections National PTA Competition theme. A student may submit an original entry in: Literature; Music Composition; Photography; Visual Arts; Film/Video; Choreography/ Dance. The contest deadline will be in October so stay tuned and begin preparing those entries! For details and rules, go to: the [Shorewood PTA website](#) or [Washington State PTA Reflections page](#). Watch for more information posted at school. If you have questions, contact [Kathy Henderson](#).

PTSA/ Principal Coffees

All parent/ guardians are invited to the monthly PTSA/ Principal Coffees. Upcoming dates:

Friday, September 26 8:30 a.m.

Friday, October 24 8:30 a.m.

Friday, November 21 8:30 a.m.

The Coffees (please bring your own coffee!) last about an hour and are held in the Library Conference Room. We sometimes have an agenda and sometimes have a conversation based on parent questions. The entrance is to the right of the main library doors. Attendees should sign in at the office upon entering the building.

Volunteer for PTSA

To volunteer—for anything for SW PTSA—send an email to swptsa@gmail.com. In the email, include your name and the year your youngest child at Shorewood will graduate. You will receive occasional emails asking for volunteers and you can respond if and as you wish.



LINK crew leaders. Photo by Paul Villanueva.

Legislative News

Suzanne Gugger, Legislative Director

Shorewood PTSA keeps our community informed about educational funding, legislation, and issues on the state level. The State PTA is very active in Olympia on causes related to kids' education and well-being. We usually start slowly on education news and keep our announcements brief, but there is so much going on that we have a special supplement on [page 11](#). Perhaps you are wondering about the letter you received from Superintendent Rebecca Miner. Perhaps you have heard about the McCleary decision and a hearing this week. Read [page 11](#) to find out how these matters affect your student's education.

IEP or 504 Plan?



Join the Shoreline Special Needs PTSA to gain access to a community who

understands, get opportunities to learn more about the special education process, and find support when needed most. Parents, students, faculty, and other interested community members may become members. The first meeting of the school year is Wednesday, September 24th. 6:30 p.m. social time, 7:00 p.m. meeting. Superintendent Rebecca Miner and Director of Student Services Amy Vujovich will speak. Other speakers—including Rep. Ruth Kagi—are lined up for upcoming 2014-15 meetings.

www.ShorelineSpecialNeedsPTA.com



Photo at left: Cross Country Boys at Camp Casey over Labor Day weekend. Photo by Paul Villanueva.

Counselors' Reminders

Pam Richards, Counseling Department Chair

Hello Parent/Guardians! Shorewood counselors look forward to working with your student(s). We are assigned to students primarily by last name, with the exception of a few specialty groups, and a ratio of approximately 375 students/counselor. When in doubt, ask us! If we can't help you, we usually know who can. Our primary focus is academic guidance, but we are a resource for personal issues as well. Much of our work is behind the scenes, collaborating with administrators and teachers to ensure students are progressing and succeeding. We provide guidance curriculum in every grade level, as well as evening events, and will keep parents posted via the *Signal*, [Shorewood website](#), and emails.

Freshmen: Welcome to Shorewood! High school is a huge transition. Our top tips for parents are 1) monitor your student's *Data Dashboard*, 2) don't hesitate to contact teachers (email is best), 3) help your student figure out a time management system, 4) encourage him/her to take some risks, including getting involved in a club, sport or other activity and 5) encourage your student to be a self advocate. High School is where students can get practice communicating and problem solving directly with adults, so that they have the skills and confidence to do so in adulthood. Shorewood is full of friendly and caring adults, so there is no better place to practice self advocacy.

Juniors: sign up for the PSAT! The PSAT will be given at Shorewood on Wednesday, October 15th from 7:50 a.m.–11:00 a.m. All Sophomores will take the PSAT and the district will pay their registration fee. Juniors need to sign up in the business office by Friday, October 10th. The test fee is \$14 payable to Shorewood High School. We highly recommend that all juniors take it; this is an inexpensive and information-packed way to prepare for the SAT. Students receive detailed results including the actual test booklet and a score report showing the answers and which questions were missed. It's also the qualifying test for National Merit Scholarship program. All for \$14! Scholarships are available for eligible Juniors—just ask your counselor. For more information, see the College Board's [Introduction to the PSAT/ NMSQT](#).

Seniors In the next month, counselors will mail home a summary sheet detailing which credits must be earned by June. It is ultimately each student's responsibility to keep track of graduation requirements. Now is the time to finalize "plans of attack" for what's next after Shorewood. Possible options: 4 year college, community/technical college and training, employment, the military, etc. Most 4 year college applications are due between November and March. Counselors and Ms. Spellman will help seniors with the college application process throughout first semester. If you plan on attending a 4 year college/university and have not taken the SAT or ACT, sign up now. Save the date for College Application Help Night on October 9th.

Upcoming Event College Application Overview and College Essay Tips, Thursday, October 9th, 6:30-7:30 p.m. in the Theater. This event features a U.W. admissions representative who will offer general tips about writing a strong college application essay applicable for any college. Shorewood counselors will review the application process. Seniors and parents are welcome. Learn how to get organized with your college applications and how to make yours stand out!

Contact Your Counselor

We encourage students to drop in during their free time, including before school, breaks, lunch, and after school. Students can also sign up on our clipboards, and we will send a note to class.

A–Fo + 10th grade AVID

Shannon Greenway 206-393-4712
shannon.greenway@shorelineschools.org

Fr–Lul + 9th grade AVID

Bill Sugden 206-393-4716
william.sugden@shorelineschools.org

Lum–Q + 12th grade AVID

Jaime Hoener 206-393-4381
jaime.hoener@shorelineschools.org

R–Z + 11th grade AVID

Pam Richards 206-393-4383
pam.richards@shorelineschools.org

Running Start & English Language Learners

Gina Engle 206-393-4718
gina.Engle@shorelineschools.org

Graduation Requirements

Graduation requirements differ by grade and are posted in the Program Manual & [Registration Guide](#). These are reviewed every year in core classes. Most 4 year college admission requirements exceed our minimum graduation requirements. see chart for Classes thru 2016

Free/Reduced Lunch (it's not just about lunch!)

If there is any chance your family might qualify for free or reduced lunch, we strongly encourage you to fill out the confidential form (download the [Free & Reduced Lunch Application](#)) or pick up a paper copy in the main office and/or district office). It takes about a week for the district office to process the paperwork. Qualifying students are eligible for a wide variety of fee waivers and scholarships, such as college application fees, SAT/ACT and class fees, in addition to free or reduced lunch rates.

Culinary Arts Dinners

Our Guest Chef Dinner Series provides an opportunity for students to work with highly acclaimed industry chefs and are held periodically throughout the school year. These fundraising dinners take place in the Shorewood Culinary Arts classroom and dining room. Money raised funds Culinary Arts education, including kitchen equipment, teaching materials, field trips, student chef coats, and garden supplies. All dinners at 6:00 p.m.

November 6: Tom Douglas Restaurant Chefs, Chef Desmond Bonow, Chef Adrienne Chamberlain, and Chef Nate Crave

January 15: Bar Dojo, Executive Chef Shubert Ho

April 2: Luc, Chef de Cuisine David Mitchell

May 14: Shorewood High School Culinary Arts, Shorewood Culinary Arts Students

Dinners are \$35 per person. Please contact [Wendy Jordan](#) for reservations. Thank you for supporting our students.
www.shorewoodculinaryarts.org

Shorewood Boosters Fall Events

September 12 Pizza Tailgate & Home Football Game. Pizza and soda: \$3 starting at 6:00 p.m., game at 7:00 p.m. vs. Glacier Peak. It is a "WHITE Out" which means Shorewood fans all wear white. Boosters will be selling white T-Bird T-shirts and other Shorewood spirit gear.

September 15 First Booster Meeting of the year in the Shorewood Counseling Center starting at 7:00 p.m.

September 26 Shorewood vs. Shorecrest Football Spirit Night and BBQ. A spirit competition between fans of the two teams. Wear your T-Bird colors and bring your T-Bird Bling. BBQ starts at 5:30 p.m. Meal includes hot dog, chips, drink, and a cookie for \$5. Special T-Bird Spirit Surprise: \$1
More information: [Shorewood Boosters website](#)

Athletics: Follow Wesco

Be sure you have the correct athletic dates, times, and scores. Many teams have their own websites (see [Shorewood Athletics](#)), but the best way to follow Shorewood sports is by subscribing to Wesco Athletics. On www.wescoathletics.com, click the orange "Subscribe" button on the right side and follow the instructions. It is a bit lengthy (in order to subscribe, you will first have to register), but eventually you can choose which school(s) and sport(s) to follow. Also, access WPA GameDay mobile site (Chrome browser works best) by going to www.wescoathletics.com on your mobile device.

Shorewood Cross Country

Join Shorewood Cross Country—the only non-cut, co-ed team sport in the fall—and be a part of a successful program at Shorewood. We create an environment where kids of all abilities are welcome and can flourish while developing a lifelong passion for running. Highlighted by a weekend retreat to Camp Casey and an overnight team trip to Portland, the season is loaded with fun and personal success. Practices weekdays 3–5:00 p.m.; contact Coach [Miles Mason](#) for more information. Everybody's welcome!

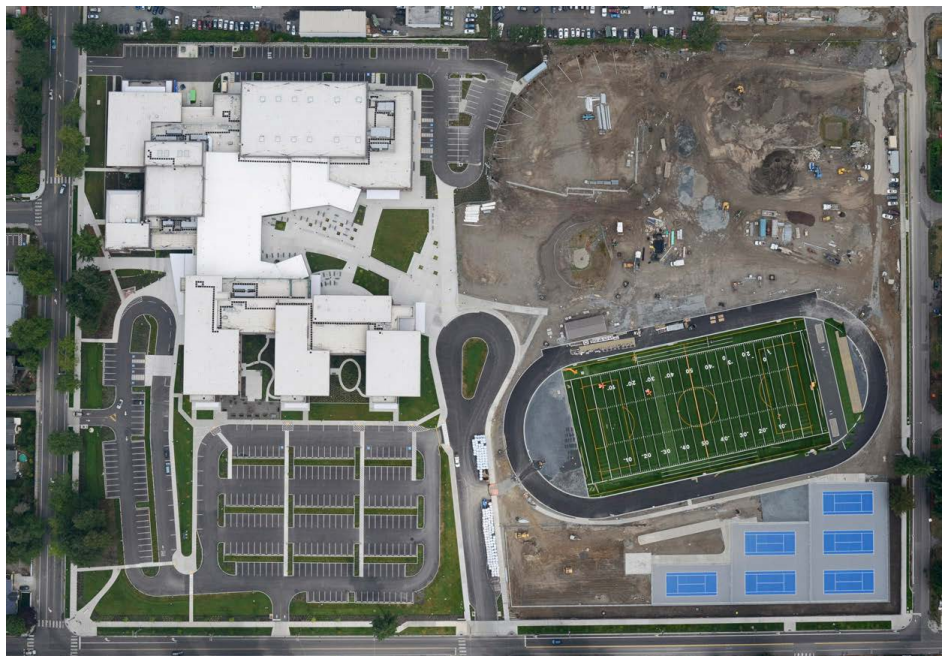


The cross country team playing a friendly game of tug-of-war on its Labor Day retreat at Camp Casey. Photo by Paul Villanueva.

Advice for High School

Excerpted from *33 Things High School Seniors Wish They Knew as Freshmen*. *Huffington Post* 1.25.14.

- Don't quit/not go out for certain sports because you think they'll take up too much time.
- Read a lot of things you like and don't forget to relax a little! It's a long road ahead.
- Don't allow your friends to define who you are. Break away from them if they don't accept you for you!
- Read and write as much as possible. Understand that they are both magic.
- Get very involved in extracurricular activities from the beginning. You may discover something you are super passionate about.
- Let your mind travel outside the school curriculum. Dive into your own ideas and follow through with them. Dream.
- Popularity should never be your first priority.
- Try harder to keep your grades up because when it counts, it will be harder to pick up the slack.
- Don't be so desperate to fit in; it's not important in the long run.
- Don't tell people you like Justin Bieber. It will ruin everything for you in 3.5 years.
- Breathe in. Breathe out. Repeat.
- Be true to yourself. Read. Do your best. Be kind. Be true to yourself.



Aerial view of Shorewood taken August 15. The new, blue, almost-ready tennis courts are at the bottom right (southwest corner of the Shorewood campus). The courts, the football/ soccer fields, and the track should be ready by the start of school. The ball fields at the top right will be completed during the school year. Photo by Sky-Pix for Shoreline Schools.

Construction Continues

Bill Dunbar, Principal

It's exciting to watch our new field complex coming together in the south half of the Shorewood campus. Construction is moving along according to expectations and we expect to open the track, field, and tennis courts as we open school. The ball fields will open later in the school year. Please be aware that the greatest impacts to our operations remain on 170th Street. Otherwise, we expect little impact from construction activity this school year. On-campus parking is complete. Additional public parking on 170th Street will add to our total available space as construction comes to an end later in the year.

Nominate a Shorewood Teacher!



K-12 teachers across the Puget Sound area will be honored for educational excellence in the Symetra Heroes in the Classroom program during the 2014 NFL season. Teachers are recognized in front of their students and peers at surprise in-school presentations and they receive a \$1,000 donation for classroom supplies. In addition, teachers receive tickets to a Seahawks home game and are acknowledged during an on-field presentation at CenturyLink Field. Over the last four years, 30 Shoreline teachers have been honored as Heroes in the Classroom. To nominate a Shoreline teacher as a Symetra Hero in the Classroom, visit SymetraHeroes.com/Seahawks.



The recent Supermoon above Shorewood. Photo by Wayne Pridemore.



In August, Shorewood leadership students spent a week at Mt. Adams Leadership Camp. They are ready for a great school year. Photo Courtesy of Leadership Advisor Paul Villanueva.

Shorecrest Dedication

The School District invites the entire community to celebrate the dedication of the new Shorecrest High School campus on Saturday, September 27th 12-4:00 p.m.. Enjoy a barbecue lunch courtesy of the Shorecrest Boosters, a dedication ceremony in the gymnasium, self-guided tours of the campus and student performances in the theater.



Fun at The Rec

The City of Shoreline operates The Rec down the street at the Richmond Highlands Recreation Center, 16554 Fremont Avenue North.



The Rec: Free drop-in teen center for middle school to 18 year olds! Come hang out with friends and enjoy: hoops, pool, ping-pong, foosball, breaking, board games, art, food, movies, and more. Hours starting September 9th: Mon: Closed, Tues-Thurs: 2:30-7:00 p.m., Fri: 2:30 p.m.-12:00 a.m., Sat: 7:00 p.m.-12 a.m.

Rec-N-Crew: Looking for a fun way to earn community service hours while giving back to your community? Join the Rec-N-Crew to learn leadership, teamwork, and life skills while making great memories. *New meeting time:* Tuesdays @ The Rec 4-5:30 p.m.

[Rec]ord: Calling all current and future musicians! Whether you are looking to pick up an instrument for the first time or wish to build upon your abilities, this is the place for you. Over 8 weeks we will explore the basics of song writing, band development, performance, and recording in a fun and casual setting. Recording session at Shoreline Community College included.

For more information, contact Austin 206.801.2643 aedge@shorelinewa.gov. [Shoreline Teen & Tween Programs](#)



Superintendent Rebecca Miner and members of the Shoreline Breakfast Rotary stuff backpacks with school supplies. The School District, PTAs in Shoreline, local service groups, and community volunteers came together for the annual Back to School event on August 23rd when families in need received full backpacks, new toiletries, free haircuts, and lunch. Shoreline Schools photos.

Outdoor Movie Night: See *Despicable Me 2*

Saturday, September 6th is the 3rd Annual Little Lemon Drops Outdoor Movie Night, benefiting Seattle Childrens Hospital! This outdoor family fun movie night at the Innis Arden clubhouse and field will feature "Despicable Me 2". There will be pizza, candy, and popcorn. Bring a warm jacket, blanket or low back chair, flashlight, money for food, and \$5 suggested admission donation. Doors open at 6:00 p.m. Raffle at 7:30 p.m., movie at 8:00 p.m.

Enjoy a \$1.00 Prize wheel and a raffle with fantastic prizes, including: hotel stays, sports tickets, signed memorabilia, pampering baskets, chocolate factory tours, gift card trees, movie night baskets, a "Despicable Me" Minion cake, restaurant gift certificates, and so much more! Raffle ticket sales are limited at the door.

This event is organized by the Little Lemon Drops Junior Guild and all of the money raised will go to Seattle Children's Hospital. To make a donation or for event details, visit us at litttlelemondropsguild.weebly.com. Questions? Email us at thelittlelemondrops@gmail.com.

Community Announcements in the *Shorewood Signal* PTSA Guidelines

In the *Shorewood Signal* and on www.shorewoodptsa.com, the Shorewood PTSA prints community notices of relevance to the school community. Announcements are meant to inform; inclusion does not constitute endorsement of the event or organization. We prioritize announcements according to: district guidelines, space considerations, and our discretion. We generally do not print articles requesting PTA involvement in causes or requests from unaffiliated nonprofits seeking host families.

School District Guidelines

The Shoreline School District works with community organizations to provide information to families about not-for-profit events and services for students and their families. The listing of any organization's flier does not imply that the services they offer have been endorsed by the District. This year we will post fliers from community organizations on a new [Shoreline E-fliers web page](#). This page will be updated weekly throughout the school year.



2014 Shorewood Cross Country Team on Whidbey Island. Photo by Paul Villanueva.

September 2014

9/3	WED	First Day of School: "C" Day after Assembly	
9/8	MON	SW Boosters Meeting (Career Center) page 7	7:00 PM
9/9	TUES	PTSA Board of Directors Meeting (Career Center)	7:00 PM
9/11	THU	Freshman LINK Meeting	9:40 AM
9/15-10/3		Homecoming Guest Pass Applications available (see swasb.com)	
9/18	THU	Fall Sports Assembly	9:30 AM
9/24	WED	Homecoming Class Meetings	9:30 AM
9/26	FRI	PTSA/ Principal's Coffee (Library Conference Room) page 5	8:30 AM
9/26	FRI	Booster BBQ & Spirit Night (Shoreline Stadium) page 7	5:30 PM
		Shorewood/ Shorecrest Game (Shoreline Stadium)	7:00 PM
9/29	MON	No School: Staff Workday	

October 2014

10/2	THU	Picture Retakes (inquire in office)	7:30 AM
10/2	THU	Club Fair (Courtyard)	11:45 AM
10/2	THU	Back to School Night (start in Gym) page 3	7:00 PM
10/6-10		Homecoming Dress Up Week, Homecoming Tickets on sale	
10/7	TUE	PTSA Board of Directors Meeting (Career Center)	7:00 PM
10/9	THU	College Application Night (Theater) page 6	6:30-7:30 PM
10/13	MON	Boosters Meeting (Career Center)	7:00 PM
10/14	TUE	Healthy Youth Survey (altered schedule)	
10/15	WED	PSAT (altered schedule)	
10/15	WED	Orchestra Concert (Theater)	7:30 PM
10/17	FRI	Homecoming Assembly (altered schedule)	12:30 PM
10/17	FRI	Homecoming Game vs. Edmonds-Woodway (SL Stadium)	7:00 PM
10/18	SAT	Homecoming Dance (Commons)	9-11:59 PM
10/20	MON	Winter Sports Informational Meetings	9:40 AM
10/23	THU	Choir Concert (Theater)	7:30 PM
10/24	FRI	Early Release	
10/24	FRI	Principal's Coffee (Library Conference Room)	8:30 AM
10/27	MON	No School: Staff Workday	
10/28	TUE	Band Concert (Theater)	7:30 PM
10/30	THU	Fall Sports Pep Rally	9:40 AM

Stay in Touch

- Watch for the monthly *Shorewood Signal*, delivered via email on the first school day of the month.
- Check the calendar on the [Shorewood home page](#).
- Check the [PTSA Calendar](#) on [www.shorewoodptsa.com](#).
- Check the [Daily Bulletin](#) tab on the main web page.
- Go to Back to School night on October 2nd, get to know your student's teachers, and sign up for teacher emails (not all classes have email lists).
- Check [Data Dashboard](#) just like you did in middle school.
- Explore [Naviance](#) (link on [Shorewood site](#), instructions [here](#)) for college and career planning and more. Freshmen will receive login information this fall.



New year, new freshman faces at Shorewood. Photos by Paul Villanueva.

Sports Information

- The electronic calendar on the [Shorewood main page](#) has current game dates and times.
- Subscribe to [Wesco Athletics](#) (choose the sport you want to follow). [page 7](#)
- Many sports have their own [web pages](#).

Legislative News: State and National Funding Issues

Suzanne Gugger, Legislative Director

The following refers to and excerpts from Superintendent Rebecca Miner's [Letter to Shoreline Families](#) August 2014.

This year, Shorewood PTA will provide you with current and relevant legislative information that will affect your children and their education. Over the summer there has been discussion about two major issues related to fully funding public education: the state and district consequences of the No Child Left Behind (NCLB) Act of 2001; and the effects of the McCleary Decision that Washington State is not meeting its obligation to fully fund basic education.

What is NCLB and what is the problem?

The NCLB Act set an unattainable goal that wanted every student in the U.S. to pass every state test in reading and math by 2014. Since 2001, our State test scores and graduation rates have continually improved, but schools were still not meeting AYP, the "adequate yearly progress" toward the goal of 100%. Most states, including Washington, were granted waivers in previous years, but the U.S. Department of Education did not renew the 2014-15 waiver because Washington did not include student test scores as part of its teacher evaluation system.

Shoreline has been identified as a "district in improvement" because the district did not meet AYP for two years in English language arts. [Data: [Shoreline School District Report Card](#).] As such, we are required to notify families and institute changes to our [District Improvement Plan](#). Nearly every school in the state will not meet NCLB requirements, and that affects Title I funding. Some of our state's and districts' most successful and highly recognized schools are now being labeled "failing" by an antiquated law that most educators and State and U.S. Congressional elected officials—as well as the U.S. Department of Education—acknowledge isn't working. The label does not fit: the Shoreline School District is addressing the needs of students and continues to make outstanding progress.

What can you do?

- Work with Shorewood PTA, teachers and administrators and the district to support changes to NCLB to improve student academic achievement
- Talk with district staff about the District Improvement Plan and the program changes that must be made to help students meet the state standards.
- Check to see if your child is eligible to receive supplemental educational services (SES, tutoring services provided outside of the regular school day).
- Participate in voluntary activities to assist your school.
- Write the Washington State [Office of Superintendent of Public Instruction](#) and [U.S. Department of Education](#) (see [Parent page](#) of ed.gov)

Source: Some information above is excerpted a [Letter to Shoreline Families](#) from Superintendent Rebecca Miner. Translated versions are available.

More Information on NCLB

[Adequate Yearly Progress](#) explanation, regulations, steps for schools. OSPI
[Failing schools letters to go out, but not without districts' retort](#). *Seattle Times* 8.13.14.
[Regional Letter protesting requirements of NCLB](#). 8.21.14 [www.shorelineschools.org](#)
[Shoreline School District 2013-14 Priorities](#) District Improvement Plan, which will be updated soon. For a hard copy, contact Lynn Ashenbrenner at 206.393.4117.
[Shorewood Improvement Plan 2013-14](#).
[Washington State Report Card](#) OSPI

McCleary/ Basic Education Funding

"It is the paramount duty of the state to make ample provision for the education of all children residing within its borders..." — Article IX, Section I, Washington State Constitution

Who/ What is McCleary?

In 2007, the McCleary family and 30 state school districts (including Shoreline) filed a lawsuit charging that the state was not fulfilling its paramount duty to fully fund basic education. The court ruled that the state is not meeting its duty and ordered the legislature to fully fund education. Since then, the legislature has failed to institute funding changes and—though there have been minor funding increases—has failed to meet the progress mandated by the State Supreme Court.

What is the local impact?

Since Washington school funding is comparatively low per student, local levies are covering basic needs when they really should be covering extras. There are state laws limiting levies—this ensures some basic equality across the state and prevents exorbitant levies.

What will happen?

The State Supreme Court will hold a special hearing on Wednesday, September 3rd, and it may find the entire state Legislature in contempt for not making enough progress to fully fund education. Watch the news and watch the October *Signal* for an update. Perhaps fully funded basic education will come to Washington.

More Information on McCleary

[Outlining history of McCleary school decision](#). *Seattle Times* 8.30.14
[State's top court may punish lawmakers over school funds](#). *Seattle Times* 8.30.14.
[Western States at bottom in per-student funding](#). *Seattle Times* 1.29.14.
[Visual data analysis of funding and achievement by state](#). *Wash Post* 1.26.14